

Fábrica de sueños de Waldo Chávez Velasco

Thank you so much for your interest in *Fábrica de sueños* by Waldo Chávez Velasco! ***This show is a senior thesis in Theatre, Dance, and Performance Studies in Directing for Joaquín Medrano.*** Below you will find important information, including details about auditioning, what roles are available for this show, rehearsal timeline, and more. Read this packet fully and if you have any questions, do not hesitate to reach out to Joaquín (joaquin.medrano@yale.edu). We are looking forward to seeing your audition!!!

About the show

****This show will be presented both in English and Spanish**** Thank you so much for your interest! As mentioned previously, this show is part of the Theatre Department's curricular season and will feature certain elements that might be interesting to you. As part of Joaquín's research, we will explore how to use the body as a comedic element when a joke cannot be translated properly. In order to do so, actors will engage in a somewhat brief and intense training on what it means "becoming the character" and understanding "the character's psyche." Actors will engage in improv and character exercises throughout the process as well as stunts that will be carefully choreographed and may or may not be included in the show itself. That being said, we want this to be a fun and exciting project for all and we will take into consideration your needs as actors. Lastly, we would like to extend the opportunity for people to work both in the Spanish and English versions of the show. If you are interested in being part of a unique experience such as learning different techniques in different languages and open your horizons to new and exciting challenges, please let us know and we are more than happy to provide you with those details! [You can read the script here!](#)

Synopsis

Don Carlos, a greedy and mean millionaire on his deathbed, begins to regret living a life of luxury at the expense of others. In order to "save his soul" he begs Luis, his loyal butler and confidant, to create a factory that will fund the wishes, any wish, of those searching for happiness. Everything goes according to plan, until one day, Luis receives a visitor with an impossible wish, something money can't buy. Panicking, Luis strikes a deal with an unknown party that changes the course of the play.

About casting

For the *Fábrica de sueños* team, it is our goal to make this show as diverse as possible. None of these characters belong to a specific ethnic group, therefore, all roles are open to people of different backgrounds. While the characters are gendered, we welcome people from all gender denominations to audition. We also understand that it may seem daunting to audition for a bilingual show if you have no experience. We are here to tell you that you have nothing to worry about and we want to encourage people with little to no experience to step out of their comfort

zone and try something new. We are here to help and if you have any questions, please feel free to reach out to Joaquín (joaquin.medrano@yale.edu).

Characters and Time Commitments

Don Carlos* - A wealthy businessman. He is the Scrooge of the play; greedy, a tyrant, but deep down has remorse for living at the expense of others (**Medium commitment:** 6-8 hours per week)

Luis - Don Carlos' butler. His whole life mission is to serve others. Very attached to Don Carlos and will go to the moon if Don Carlos desires it. (**High commitment:** 8-10 hours per week)

Juan* - A person with a dream. He is very stubborn and does not want to accept anyone's help. But in the end, his greed makes him forget his pride. (**Low commitment:** 4-6 hours a week)

*The character of Don Carlos can be double cast with the character of Juan.

Timeline and Obligations

January 14-March 7: Rehearsals

March 8-23: Spring Break

March 24-April 2: Tech week

April 3-5: Show days!

All breaks are accounted for. Although the process may seem long, remember that this production will be performed in Spanish AND English. Therefore, to prevent long hours of rehearsal all at once, we will break down our time through the span of both semesters.

Since this is a senior thesis, we ask that you take this project seriously. For this reason, we ask that you consider your responsibilities throughout the semesters. We ask that after February, this show must become your priority. For this, we ask that the last show you should take part in needs to **END February 28, 2024**. Of course, we will also evaluate conflicts on a case by case basis so please don't be discouraged if you have any conflicts. If there are any clubs, activities, or other responsibilities you are aware of that may conflict, please let us know in your [audition form](#). Please also reach out to Joaquín (joaquin.medrano@yale.edu) for info about auditions!

Last but not least, get to know the team in the following page! Again, thank you so much for your interest in *Fábrica de sueños* and we can't wait to meet you!

Lots of love and great vibes,

-The Fds team ❤️

Meet the team



Joaquín Medrano (*Director*; he/him)

Joaquín is super excited to be directing *Fábrica de sueños* and he can't wait to see your incredible talent! Joaquín directed Yale's first full Spanish show last semester, *Luz Negra*, and has been a member of Teatro de Yale since their first production of *In the Heights*. Outside of theatre, you can find Joaquín at the Jitter Bus (he knows it's an issue). Feel free to ask him about his Karol G obsession and the epic highs and lows of Yale theatre.



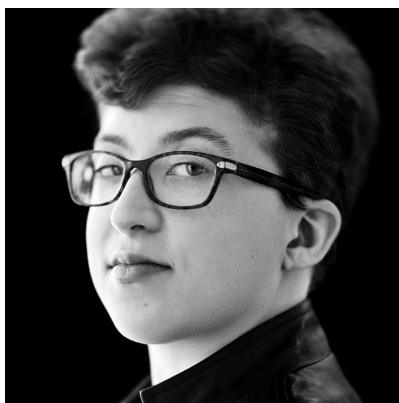
Daniela Garcia (*Producer*; she/her)

Daniela is thrilled to be working on the team for *Fábrica de sueños*. This will be her first time producing a show on campus but has previously been part of *Luz Negra*, *Alice by Heart*, and *21 Chump Street*. Outside of theatre, Daniela loves getting boba, reading fantasy novels, and hanging out with friends!



Emma Ventresca (*Producer*; she/her)

Emma is a junior double majoring in Economics and Theater and Performance Studies. As a student of the Shen Curriculum for Musical Theater, she has trained under Broadway veterans Amy Justman and Heather Botts and Tony-nominated lyricist Michael Korie. Emma has served as an Associate Board member for the Yale Dramatic Association, helping to organize signature DramaTalks for the second-oldest collegiate theater association in the United States. In her role as CEO of Aaron&Emma Productions LLC, she has received artistic grants to produce two original musicals on Yale's campus.



Coryell Smith (*Stage Manager*; they/he)

Coryell is a senior astrophysics major and the stage manager for *Fábrica de sueños*. They have stage managed many shows and are excited to bring this show to life. Their job on this project is to ensure the gears of the rehearsal process are running smoothly and facilitate communication between the cast and production team.